

*A new way
to build the
ICD*



What can we learn
and share within the
UN Family of Classifications

Dr. T. Bedirhan Üstün
*Coordinator, Classifications, Terminologies, Standards.
World Health Organization*

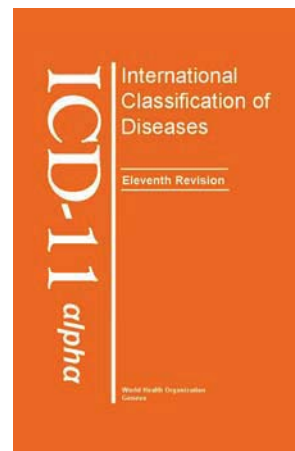


ICD -11

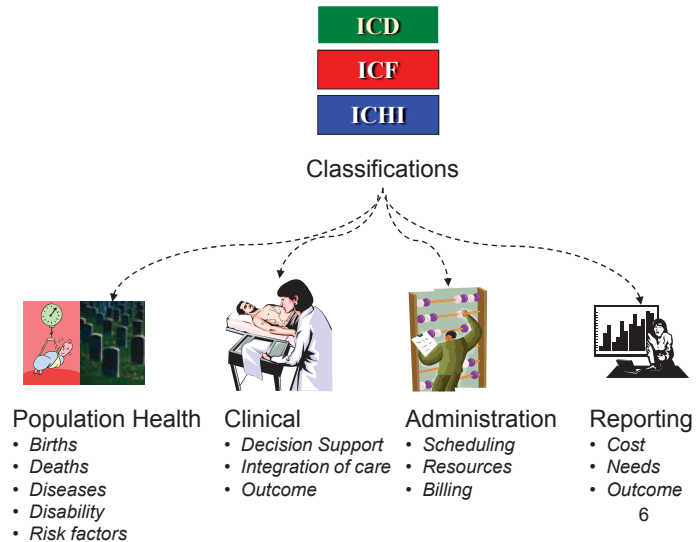
**The International Classification of Diseases 11th Revision
is due **by 2015****

ICD is the **international
standard** to measure
health & health services

- Mortality Statistics
- Morbidity Statistics
- Health Care Costs



Placing WHO Classifications in HIS & IT



Problems with ICD-10

1. Driven by **mortality** and **billing** use cases
2. Used in **117 out of 193** countries for official statistics
3. **Limited web presence**
4. Does not interoperate with **electronic health records**
5. "Frozen historical accidents"
6. Is just "a laundry list " – **no definitions**

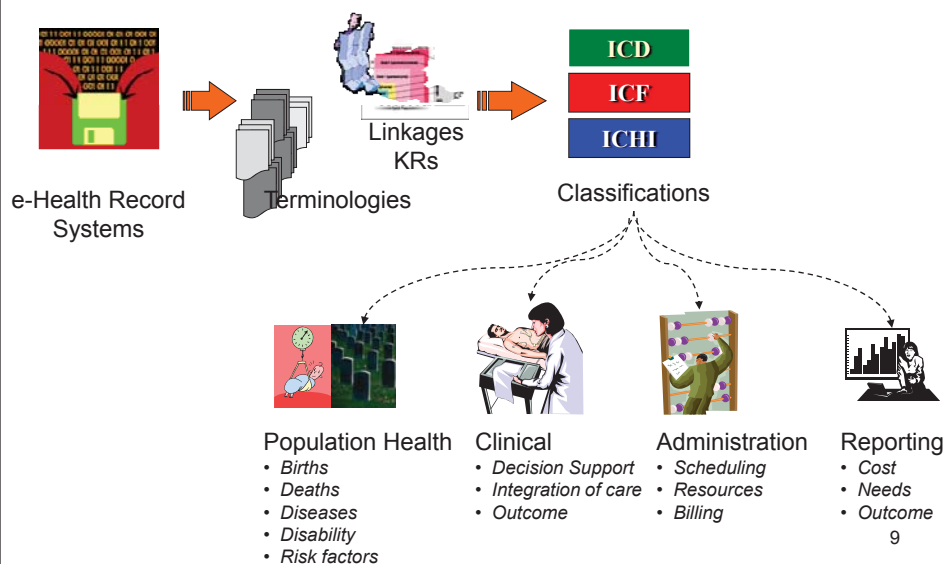
7

Start-~~ing~~ Point



8

Placing WHO Classifications in HIS & IT



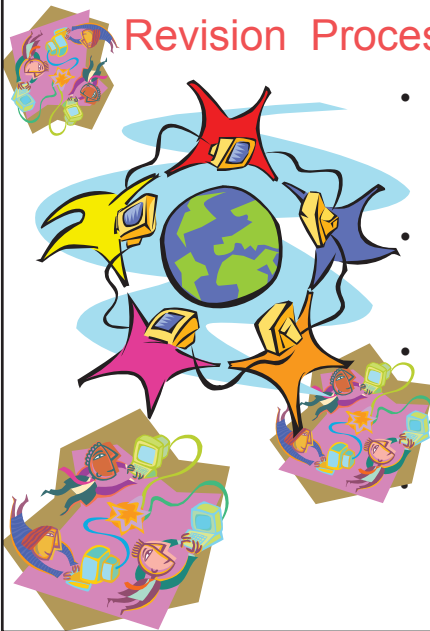
Construction of ICD-10: *Revision Process in the 20th Century*



- 8 Annual **Revision Conferences**
(1982 - 89)
- **17 – 58 Countries** participated
 - 1- 5 person delegations
 - mainly **Health Statisticians**
- **Manual** curation
 - List exchange
 - Index was done later
- "Decibel" Method of discussion
- Output: **Paper** Copy
- Work in **English** only
- **Limited testing** in the field

12

Construction of ICD-11: *Revision Process in the 21st Century*



- **Internet-based permanent platform**
 - All year round
 - Open to all people in a structured way
 - Content experts focus
- **Digital** curation
 - Wiki-like collaboration
 - Enhanced **discussion & peer review**
- **Electronic copy** → print version
- Work in **multiple languages**
- **Planned field tests**
 - Based on Use Cases

13

How do we go from
Here to 21st Century?

Key Differences in ICD-10 → ICD-11

1. Production style

- Annual Revision Conferences → **Collaborative Authoring**

2. Deliverables

- Paper Books → **Digital** + Paper Books
- Manual Production → digital production of **multiple linearizations**

3. Category Information

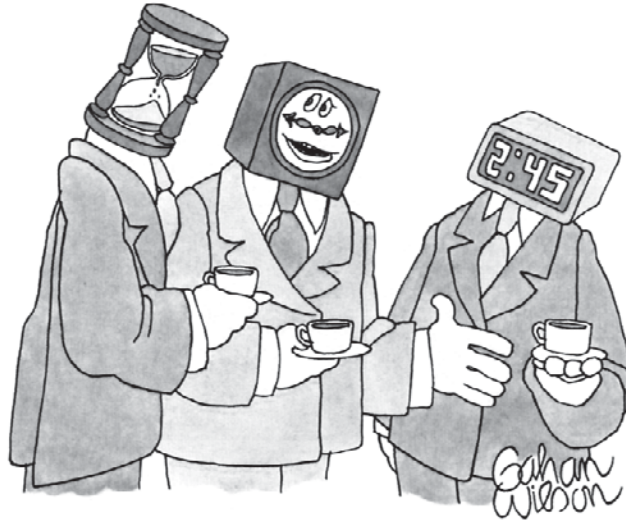
- Codes & Titles → **Textual Definitions** for all ICD entities
- Additional information in specialty adaptations only → **Structured descriptions in line with a formal model**

4. Linkages to terminologies and ontologies

- e.g. **SNOMED-CT**, Gene Ontology

15

Interoperability



"Basically, we're all trying to say the same thing."

16

ICD-11 Revision Goals

1. Evolve a **multi-purpose** and **coherent** classification
 - **Mortality, morbidity, primary care, clinical care, research, public health...**
 - **Consistency & interoperability across different uses**
2. Serve as an **international** and **multilingual** reference standard for **scientific comparability** and **communication** purposes
3. Ensure that ICD-11 will function in an **electronic health records** environment.
 - **Link ICD logically** to underpinning **terminologies and ontologies** (e.g. SNOMED, GO, ...)
 - ICD Categories **"defined"** by **"logical operational rules"** on their associations and details

17

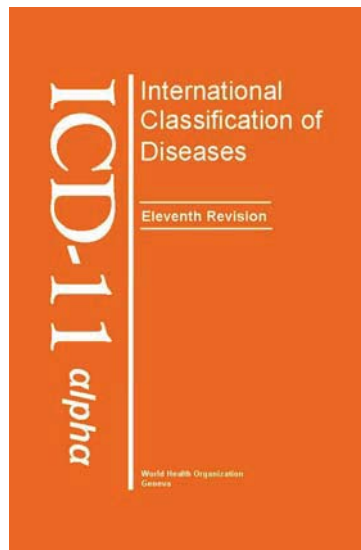
ICD-11 Timeline

- **2011** : **Alpha version** (ICD 11 alpha draft)
 - +1 YR : **Commentaries and consultations**
- **2012** : **Beta version** & Field Trials Version
 - +2 YR : **Field trials**
- **2014** : **Final version** for public viewing
- **2015** : **WHA Approval**
- **2015+** **implementation**



18

ICD11 alpha



<http://www.who.int/classifications/icd/revision>

- **Alpha – Browser & Print**
10 look & feel + **descriptions – code structure** !



- **ICD-11 alpha draft is INCOMPLETE**
- **updated on a daily basis**
- **NOT TO BE USED** for CODING at this stage
- **not yet been approved** by the TAGs, RSG or WHO

19

Good News



- **“Alpha” has proven feasible**
 - Continuity: respectful to **ICD traditions** – **break** with non-essential features
 - Content Model proves useful & relevant
- **Computerization is feasible**
- **Unprecedented linkage possibilities to:**
 - SNOMED CT
 - ICF
 - other WHOIC and UN Family of Classifications
 - other ontology, terminology and standard sources (QSM, TM, ICPS...)
- **Better Multilingual Production opportunities**

20


NOT so-good News




- **Below expected targets yet**
 - < 80% definitions
 - < 20% content model
- **Not all TAGs are at similar development stage**
- **Engagement of international Stakeholders**




21




NEW ICD-11 Features




Internet Based Platform




Input from all Stakeholders




Content Model



Definitions



Field Trials for Use Cases



Electronic Health Record Ready

Multi Lingual Representations

العربية	Arabic
官话	Chinese
English	English
Français	French
Русский язык	Russian
Español	Spanish
Deutsch	German
Português	Portuguese

22



NEW Participation of Interested Stakeholders

- Using a “**Collaborative Authoring Tool**”
 - WHO aims to engage all experts and stakeholders to
 - **Make comments**
 - **Make proposals**
 - **Take part in Field Trials**
 - Engage in **translations – multilingual representatsion**
 - use it in **special projects**

23



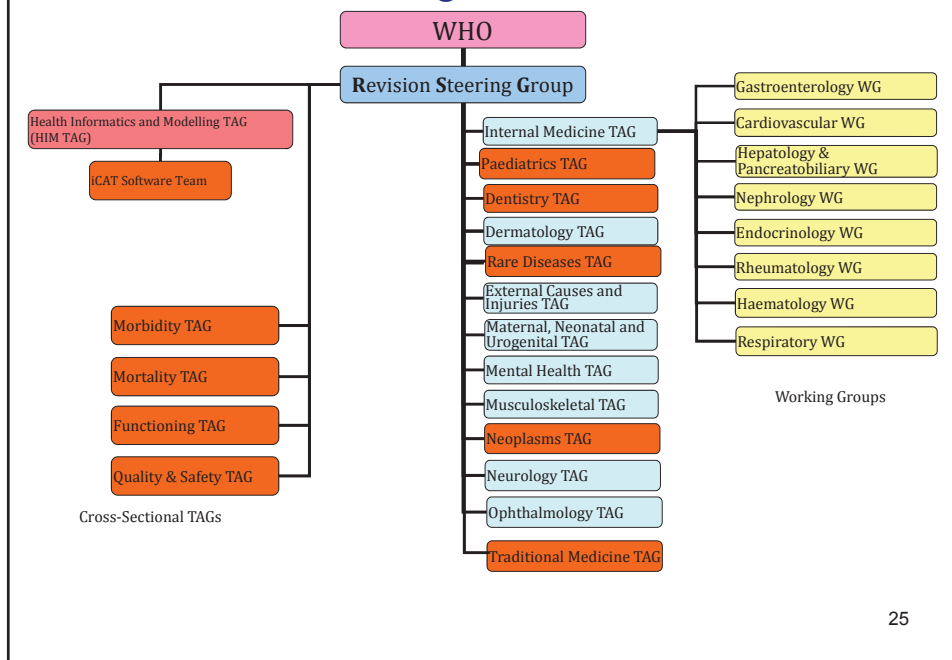
Input from all interested stakeholders

- **Structured** input according to a formal **Content Model**
- **Direct participation by users: content experts**
- Subjected to a **scientific peer review** process guided by **Topic Advisory Groups**



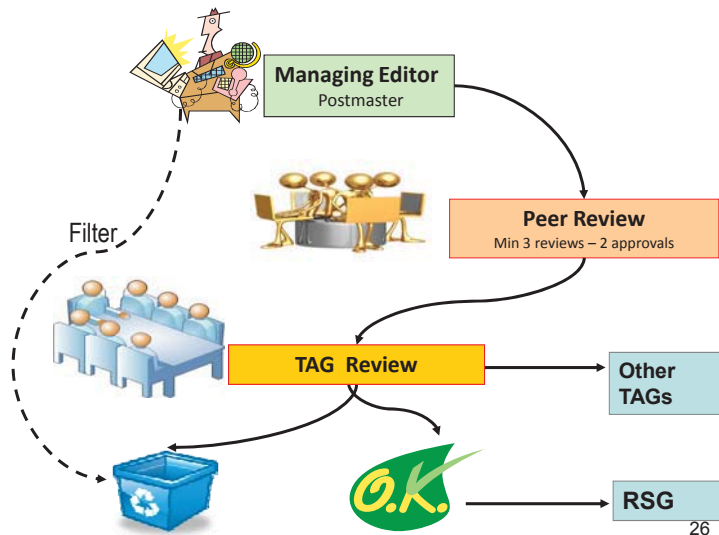
24

ICD Revision Organizational Structure



25

Life-cycle of a Proposal



Definitions

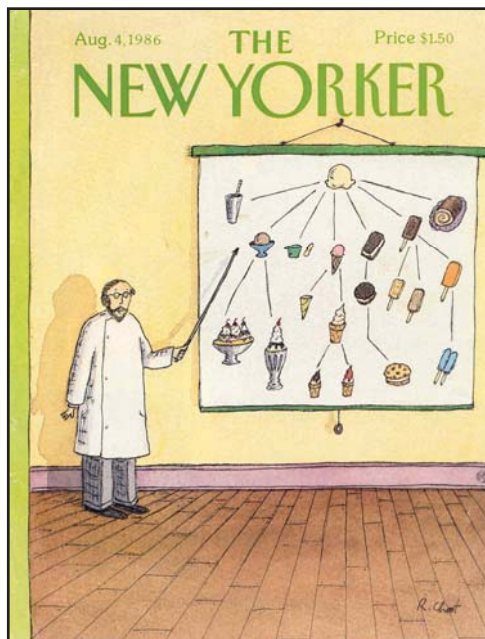
- All ICD entities will have **definitions**:
 - key descriptions of the **meaning** of the category in human readable terms – to **guide users**
 - *Limited definition in Print Version – 100 words*
 - *Detailed definitions ONLINE*
- Definitions will be *compatible* with:
 - the **Content Model**
 - **Diagnostic Criteria**
 - across the **whole classification** and the versions

Definition of Disease

a set of dysfunction(s) in any of the body systems
including:

- with a known pattern of signs, symptoms & findings
» *symptomatology - manifestations*
- probably with an underlying explanatory mechanism
» *etiology*
- a distinct pattern of development over time
» *course and outcome*
- a known pattern of response to interventions
» *treatment response*
- with linkage to underlying genetic factors
» *genotypes, phenotypes and endophenotypes*
- with linkage to interacting environmental factors

28



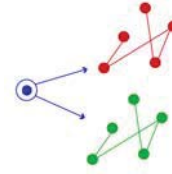
What is Ontology?

- **Ontology (philosophy)**
 - the Organization of Reality ☺ !!!
- **Ontology (computer science)**
 - the explicit – operational description of the conceptualization of a domain:
 - Concepts: **entity** and **quality** (properties and attributes)
- An ontology defines:
 - a **common vocabulary** → a shared understanding/exchange:
 - among people
 - among software agents
 - between people and software
 - to reuse data - information
 - to introduce standards to allow interoperability

29



Content Model



- **A structured framework**
 - captures the **knowledge** that underpins the **definition** of an ICD entity
 - Represents ICD entities in a **standard way**
 - Allows **computerization**
- Each ICD entity is defined by **“parameters”** representing different dimensions
- A parameter is expressed using standard terminologies **“value set”**

31

THE CONTENT MODEL

Any Category in ICD is represented by:

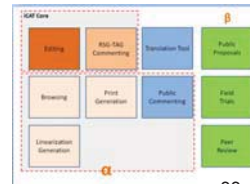
- | | |
|---|---|
| <ol style="list-style-type: none"> 1. ICD Concept Title <ol style="list-style-type: none"> 1.1. Fully Specified Name 2. Classification Properties <ol style="list-style-type: none"> 2.1. Parents 2.2. Type 2.3. Use and Linearization(s) 3. Textual Definition(s) 4. Terms <ol style="list-style-type: none"> 4.1. Base Index Terms 4.2. Inclusion Terms 4.3. Exclusions 5. Body Structure Description <ol style="list-style-type: none"> 5.1. Body System(s) 5.2. Body Part(s) [Anatomical Site(s)] 5.3. Morphological Properties 6. Manifestation Properties <ol style="list-style-type: none"> 6.1. Signs & Symptoms 6.2. Investigation findings | <ol style="list-style-type: none"> 7. Causal Properties <ol style="list-style-type: none"> 7.1. Etiology Type 7.2. Causal Properties - Agents 7.3. Causal Properties - Causal Mechanisms 7.4. Genomic Linkages 7.5. Risk Factors 8. Temporal Properties <ol style="list-style-type: none"> 8.1. Age of Occurrence & Occurrence Frequency 8.2. Development Course/Stage 9. Severity of Subtypes Properties 10. Functioning Properties <ol style="list-style-type: none"> 10.1. Impact on Activities and Participation 10.2. Contextual factors 10.3. Body functions 11. Specific Condition Properties <ol style="list-style-type: none"> 11.1. Biological Sex 11.2. Life-Cycle Properties 12. Treatment Properties 13. Diagnostic Criteria |
|---|---|

32



Internet Based Platform

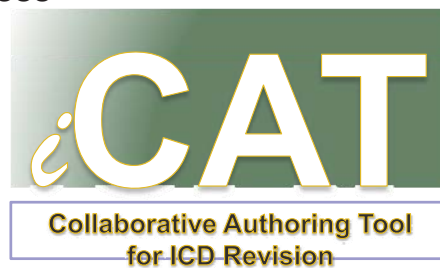
- **Open** all year round:
 - with *continuous updates*
- **Open** to all interested people
 - Health Care Providers, Information Managers
 - Structured **review** by experts (TAGs)
- In a **structured** web platform:
iCAT suite



33

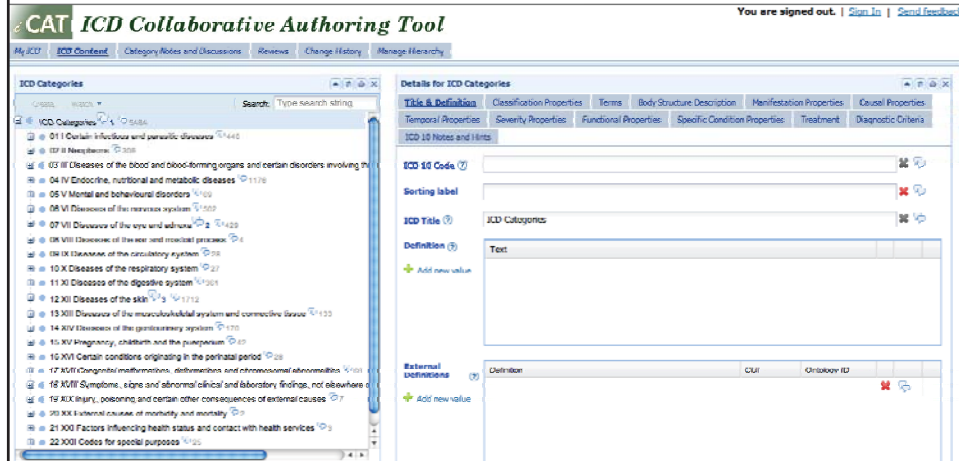
iCAT

- Open and collaborative process
 - Users are empowered
 - Web based
 - Like **WIKI – Trip Advisor**
 - But **structured**
 - **Editorial Oversight**



34

iCAT



35

ICD11 Components

Foundation: ICD categories with

- Definitions, synonyms
- Clinical descriptions
- Diagnostic criteria
- Causal mechanism
- Functional Properties



Find Term

SNOMED-CT,
International Classification of Functioning,
Disability and Health (ICF)...

Linearizations



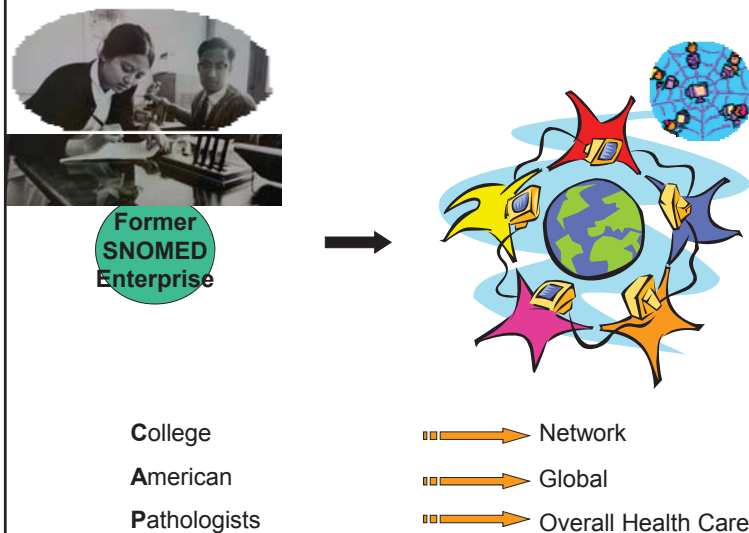
Primary Care

Morbidity

Mortality

36

SNOMED : Old and Current



37

ICD-11

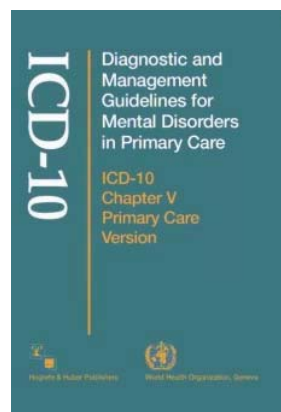
– Simultaneous development in **Multiple Languages**

- التصنيف الدولي للأمراض
- 國際疾病與相關健康問題統計分類
- **International Classification of Diseases**
- **Classification internationale des maladies**
- **Международная классификация болезней**
- **Clasificación internacional de enfermedades**

38

ICD-11

- **Multiple Settings:**
 - Primary Care
 - Clinical Services
 - Research
- **Specialty Adaptations:**
 - Children and Youth
 - Oncology
 - Mental Health
 - Neurology
 - Musculoskeletal
 - Dermatology
 - Dentistry



e.g. ICD-10 Diagnostic Guidelines for Mental Health in Primary Care

40



ICD-11 Features



Internet Based Platform



Input from all Stakeholders



Content Model



Definitions



Translations



Field Trials for Use Cases



Electronic Health Record Ready

41

Single Assessment Questions

Is this category in the right place?

Yes

No → explanations ...

1 Very Clear

2 Clear

3 Moderate

4 Not clear at all

SAQs

Single Assessment Question

[1]

VIEWER sees “a category” in the Browser:

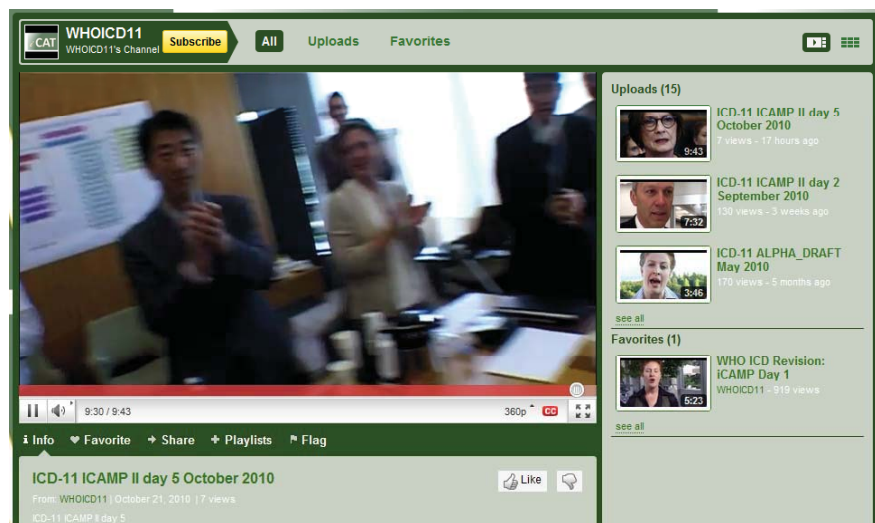
- Is this “category” in the right place?
 - Yes
 - NO
 - Where would you put it?
 - Why – state your reason?
 - Can you point to a web evidence?

BETA PHASE FIELD TESTS: How TWO different users code the same case ?



44

YouTube WHOICD11



45

Frequent Criticisms



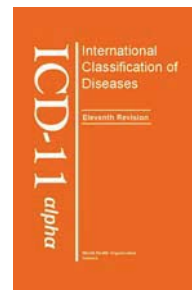
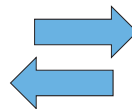
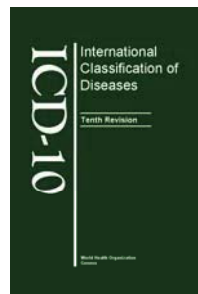
- too **ambitious**
 - recreation of a **Textbook of Medicine**
 - competing with **SNOMED-CT**
 - replicates the work done elsewhere: **DSM, ICPC, ...**
- too **academic** – far from what ICD is needed for
- will overhaul **national statistics**

46


ICD11 alpha - DIFF




- Shows the change from ICD-10
 - Backwards compatible



47

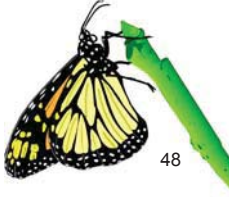


ICD11 alpha



A caterpillar,
This deep in fall-
Still not a butterfly


Basho



48

ICD-11

- **International Public Good**
 - Openly Accessible
 - **Free** for WHO Member States
- Available in **multiple formats**:
 - Printed Book editions
 - Internet-edition
 - Various computerized tools



49

Roadmap



- Collaborative Authoring Tools
- Review Mechanisms
- Field testing
- Multilingual Production
- USE CASES
- Linking Classifications