



DATA DISAGGREGATION to leave *No1* behind

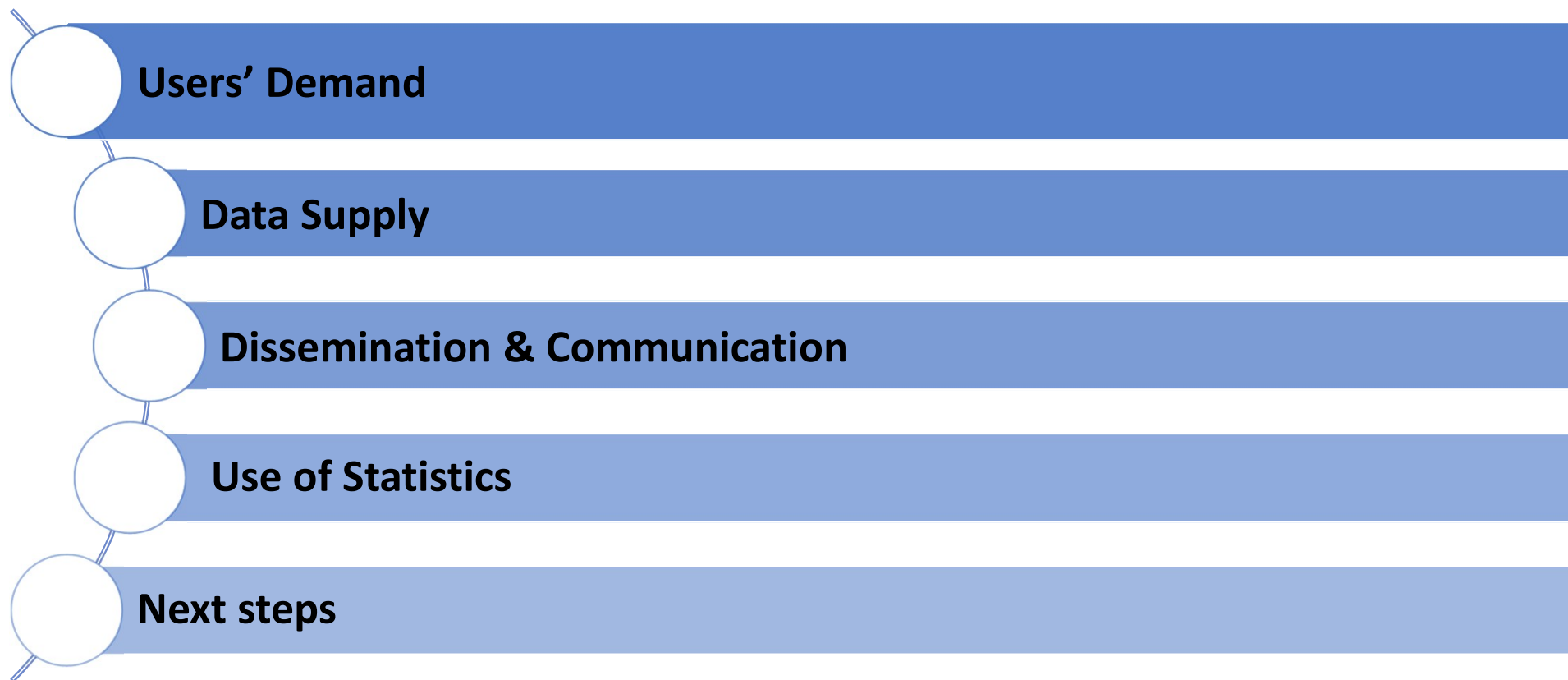
Republic of Moldova

Workshop on Data and Evidence-based VNRs,
9-12 December 2019, Vienna, Austria

Aurelia SPATARU, National Bureau of Statistics



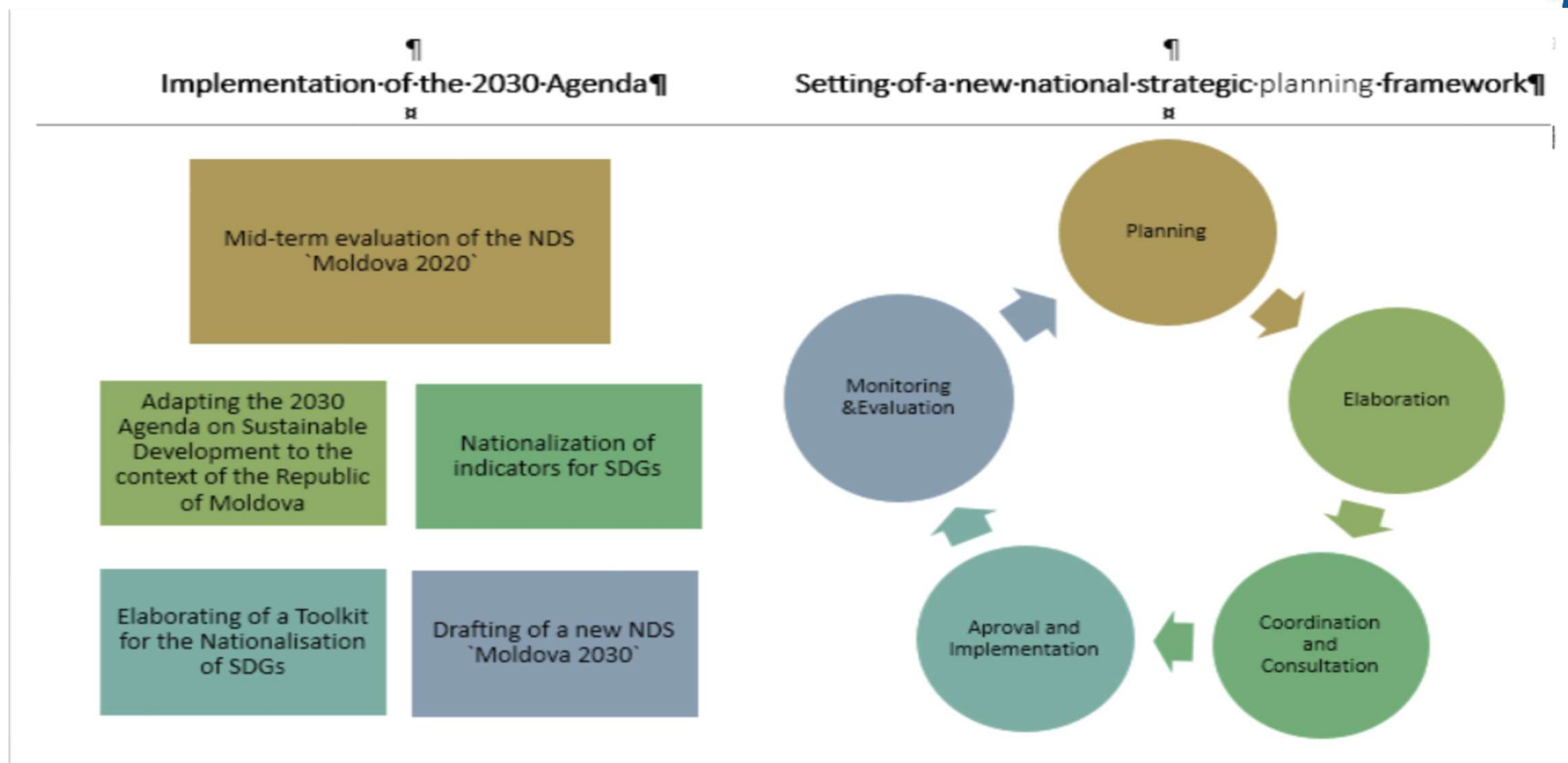
CONTENT



1

USERS' DEMAND

General BACKGROUND



CURRENT STATE OF PLAY of the M&E systems

Main Features	M&E of policy documents	M&E of normative acts	M&E of Government performance
Monitoring system is established and functional	Yes	Yes	Yes
Evaluation system is fully established	Partially	No	Yes
Evaluation system is coherent and consistent	No	No	No
Monitoring system enables activity and result tracking	No	No	No
M&E system serve as evidence for policy/decision making	Insufficiently	Insufficiently	Insufficiently

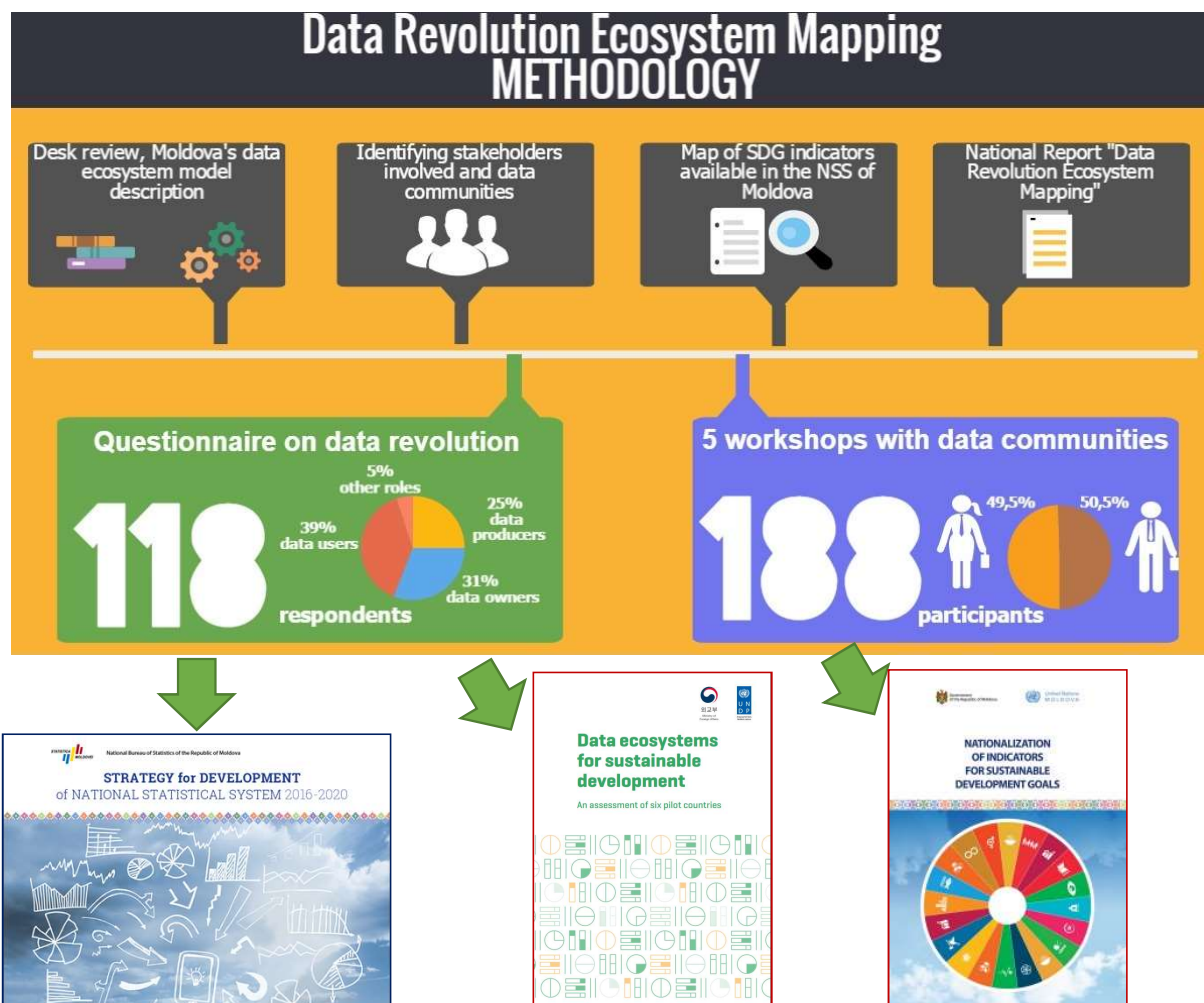


AVAILABLE *versus* DESIRABLE

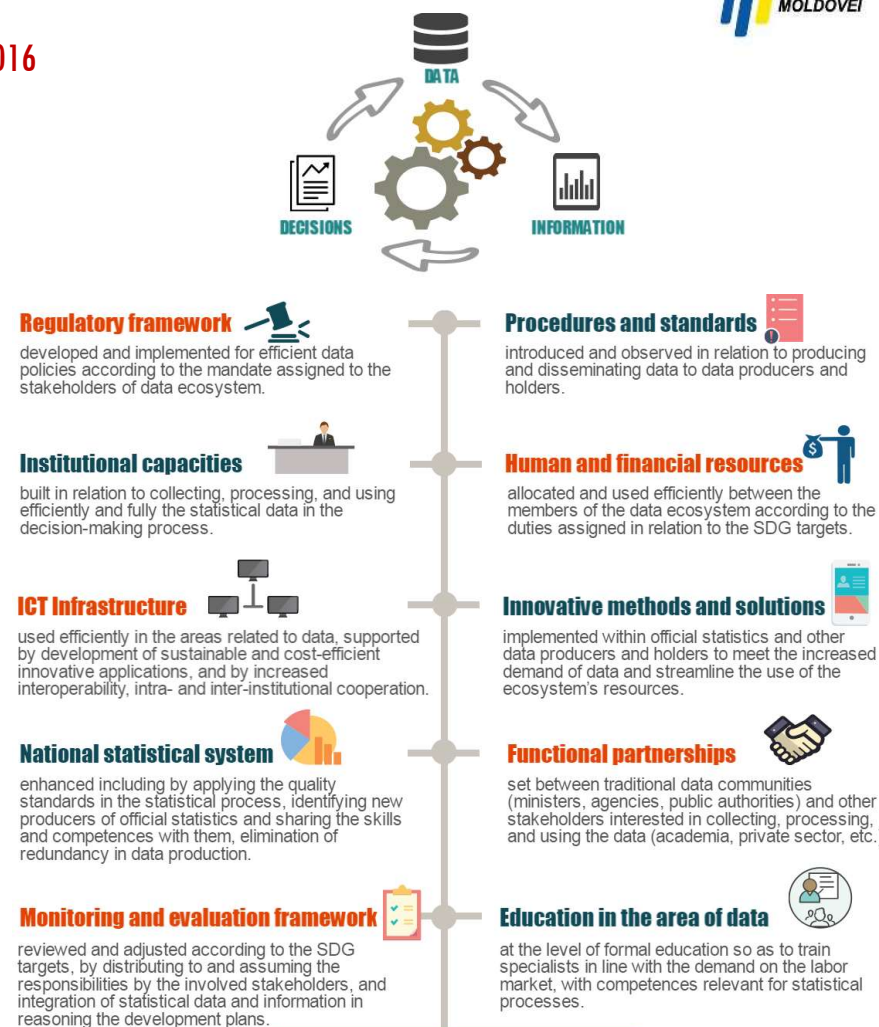
	Current M&E System	Result Based M&E System
Timely	<ul style="list-style-type: none"> Mostly timely 	<ul style="list-style-type: none"> Aligned with the budget planning process
Relevant	<ul style="list-style-type: none"> Different practices both some very descriptive and some more concise 	<ul style="list-style-type: none"> Reporting on relevant and strategic information
Focused	<ul style="list-style-type: none"> Reporting on activities 	<ul style="list-style-type: none"> Reporting on progress towards objectives, targets and impact
M&E framework	<ul style="list-style-type: none"> Institutional framework The mix of performance/progress/output indicators Data collection process Frequency and reporting deadlines M&E reports provide information on implemented activities 	<ul style="list-style-type: none"> Institutional framework Performance indicators with <u>baseline, inter-mediate and final target values</u> <u>Sources and methods of data verification</u> <u>Data collection method</u> <u>Monitoring and reporting templates</u> Frequency and reporting deadlines <u>Purpose, criteria and key evaluation questions</u> <u>Evaluation methodology and reporting requirements</u> <u>M&E reports provide evidence for policy improvements</u> <u>Disaggregation data</u>
User friendly	<ul style="list-style-type: none"> More text and some visual information 	<ul style="list-style-type: none"> Simple language, structure, concise (analytical) text and visual information



Key elements of an INCLUSIVE DATA ECOSYSTEM



2016



2

DATA SUPPLY



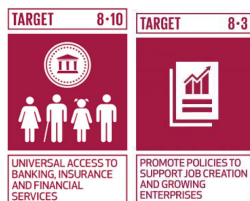
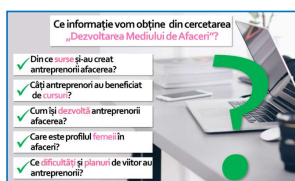
NEW data COLLECTION & PRODUCTION



Survey on
entrepreneurship
from **gender**
perspective (2018)



By sex, ages, marital status,
economic activity, etc.



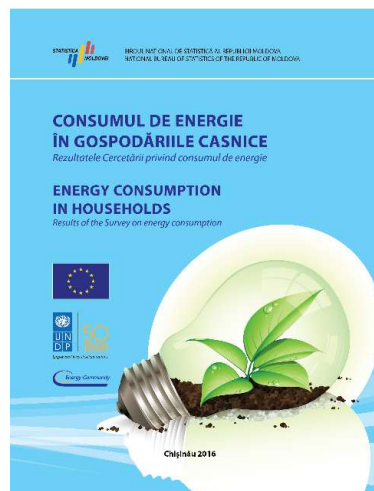
First survey in 2009



Survey on **energy**
consumption in
households (2016)



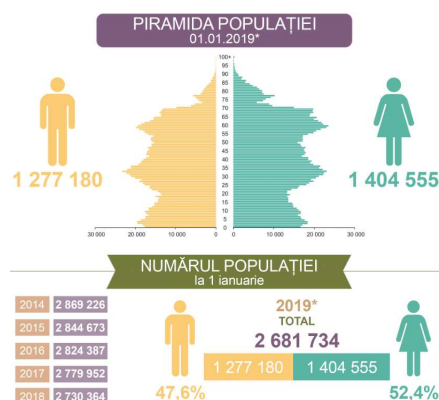
By area, zones, type of energy,
energy sources



New **population** estimates
(usual residence – new!)
international migration
2014-2018



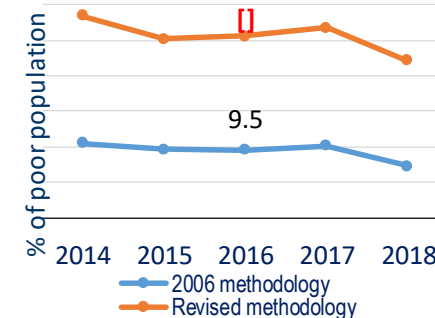
By sex, ages



New methodology
of **absolute**
poverty line (2018)



By regions, rayons,
villages



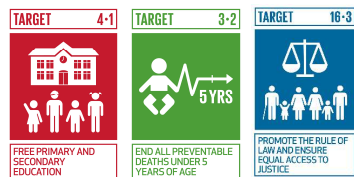
DISAGGREGATED data production

Child-focused indicators
to monitor SDG and national policies

By sex, ages, economic status of households, health status, education level, etc.



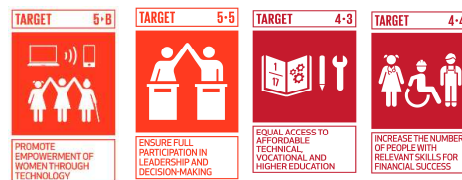
Monitoring the situation of children and women in Europe and Central Asia



regular

National statistics on **Women and men** in ICT (2018)

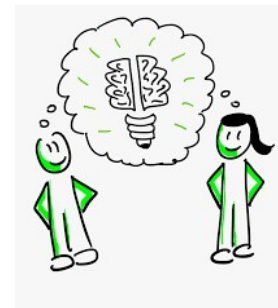
By 6 areas of ICT, ages, employment status, working time and conditions, education level, etc.



National MPI

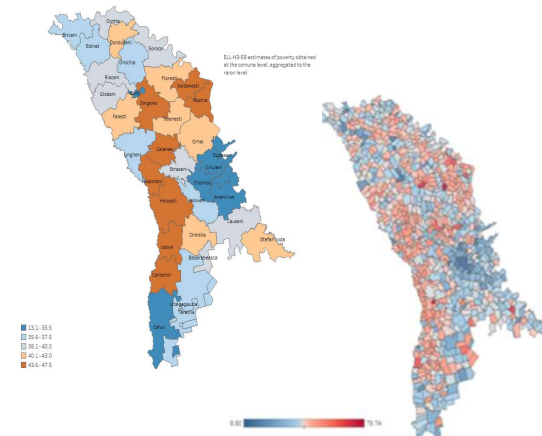


Collective intelligence: defined by users & "poor" (migrants, elderly, un/employed, young unemployed, HIV-SIDA, Roma, women with children, people with chronic diseases)



Release - April 2020

Poverty mapping
risk of poverty at lowest possible **sub-national level** (2019)



3

DISSEMINATION & Communication

StatBank - online database

<http://statbank.statistica.md>



Since 2014, dedicated folders on:

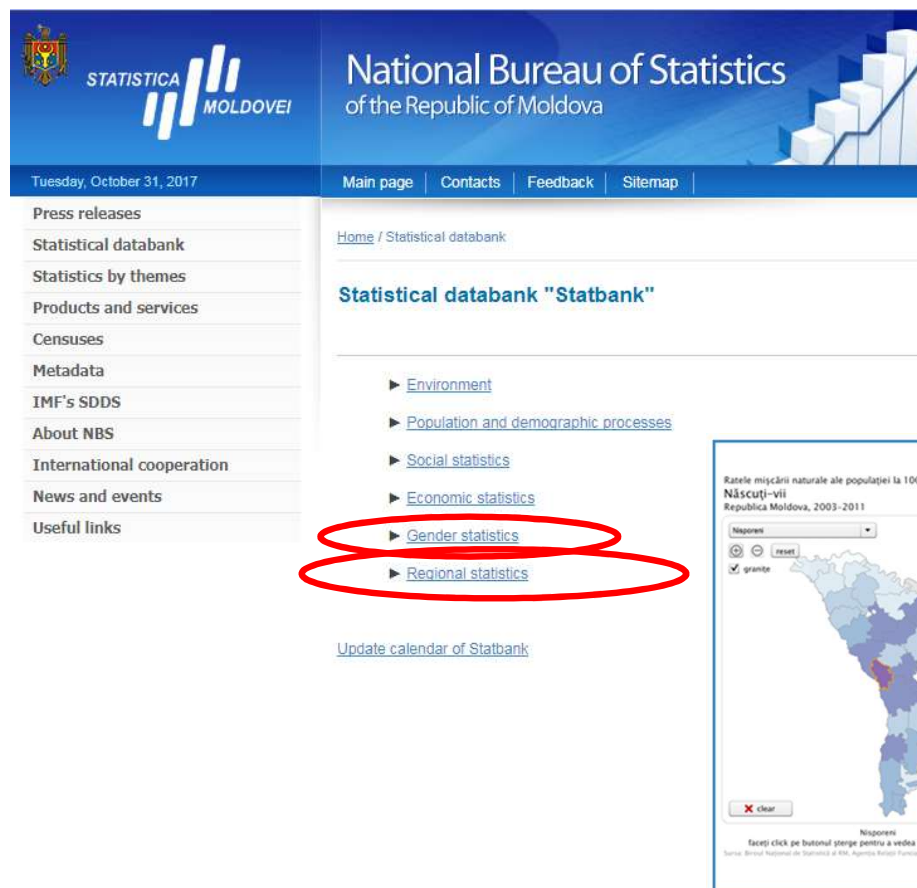
- ✓ *Gender statistics*
- ✓ *Regional statistics*

Gender statistics:

- structured in 4 subsections according to the **main policy** decision making **areas**
- Data available for 2008-2017 time series and includes **42 indicators** from 52 of the Minimum Set of Gender Indicators recommended by UNSD

Regional statistics

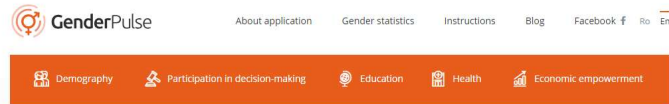
- Animated maps



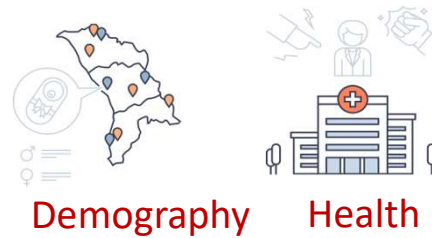
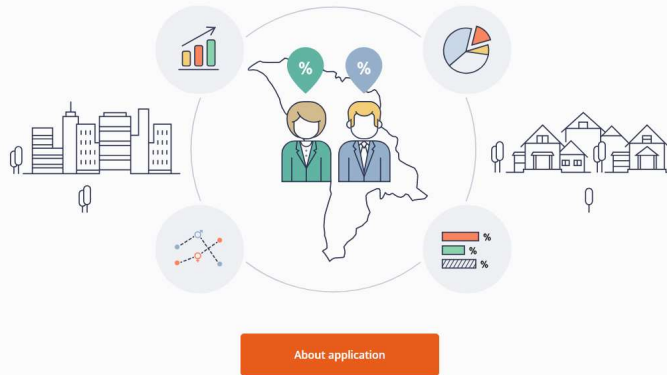
e-application



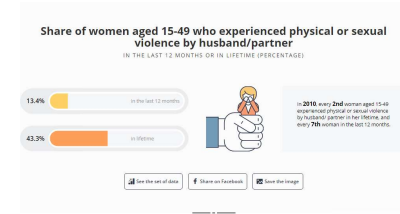
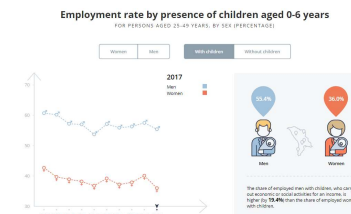
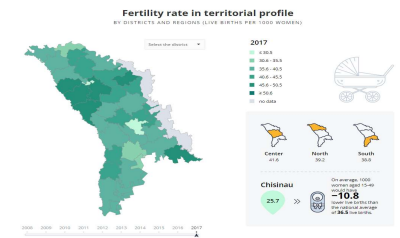
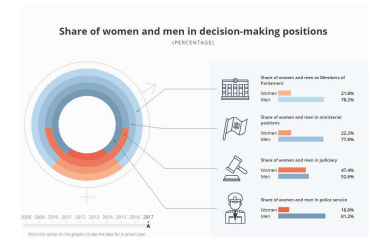
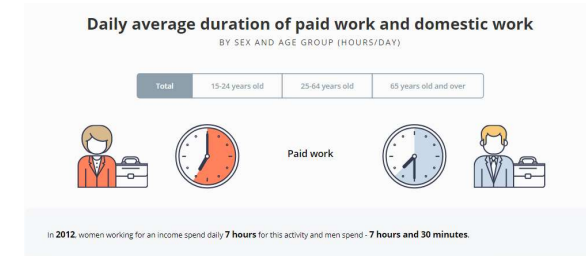
<http://www.genderpulse.md>



Gender equality in figures



Education



E-solution on gender statistics dissemination

- Interactive visualization
- 5 domains, 44 indicators with **animated infographics**
- uses the API to **update** data from the data bank **automatically**
- exceptional **quality in displaying the images**

2016-->



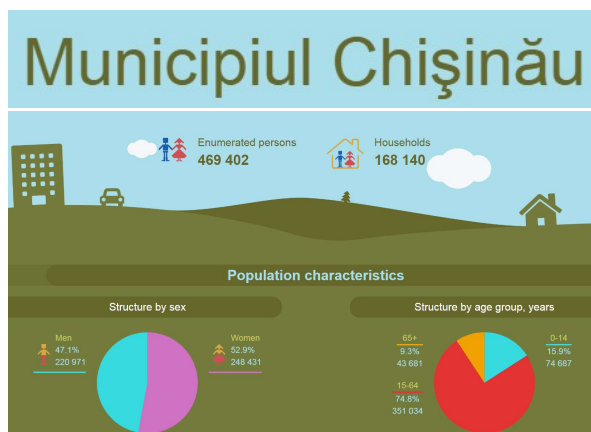
e-application



<http://recensamant.statistica.md>



Locality passport Tables Infographics Maps About



mobile app

Locality passport Tables Infographics Maps About

POPULATION HOUSEHOLDS DWELLINGS

Variables

- ☒ Locality
- ☐ Residence area
- ☐ Sex
- ☐ Age group
- ☐ Ethnicity
- ☐ Mother tongue
- ☐ Language usually used for communication
- ☐ Religion
- ☐ Place of birth
- ☐ Previous place of residence, town

Locality

Select all

- ☐ Total
- ☒ R-ul Anenii Noi
- ☒ R-un. Bălți
- ☒ R-ul Basarabeasca
- ☒ R-ul Briceni
- ☒ R-ul Cahul
- ☒ R-ul Călărași
- ☒ R-ul Cantemir
- ☒ R-ul Căușeni

Cells: 0 | Nr. of totals: 0

Display: Drag the variables in the grey boxes in order to restructure the display

Rows: LOCALITY

Columns: [Grid]

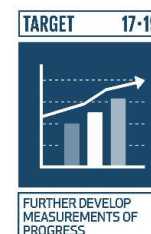
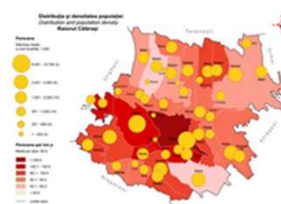
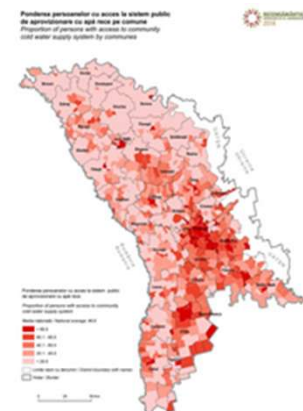
Tables: [Grid]

Buttons: GENERATE, DOWNLOAD XL, DOWNLOAD CSV

Locality passport Tables Infographics Maps About



Tables Infographics Maps About



VISUALS & info-GRAPHICS

Thematic info-graphs

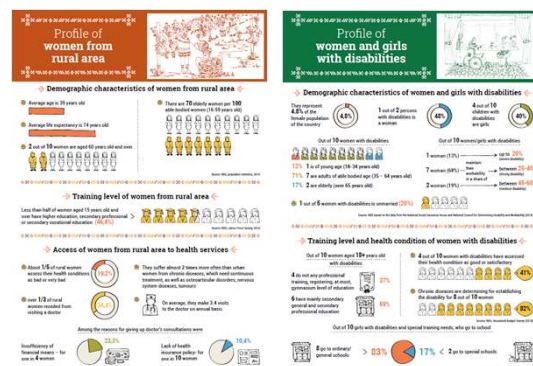
Analytical briefs

Children

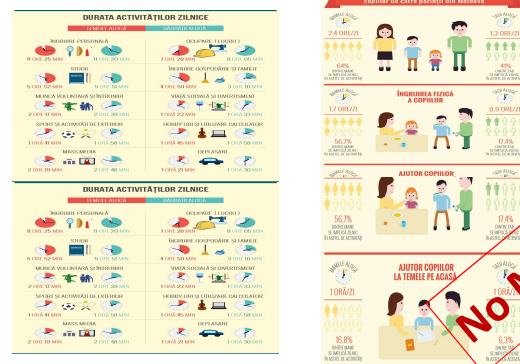


No CHILD left behind!

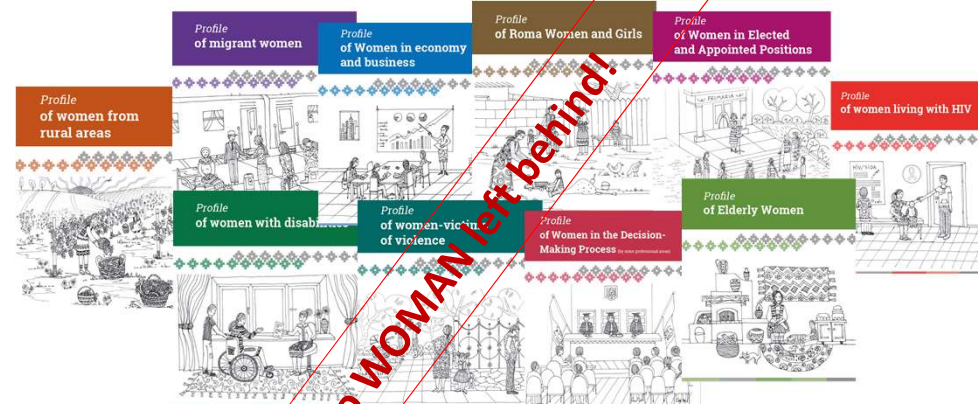
Women (most vulnerable - 10)



Women & Men - Time use (10)



No MAN left behind!

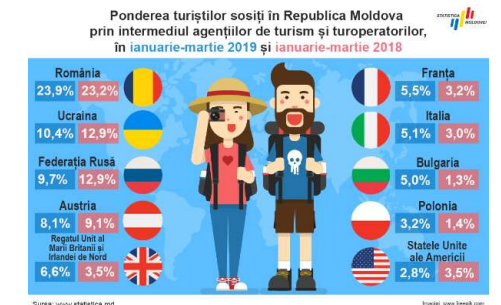
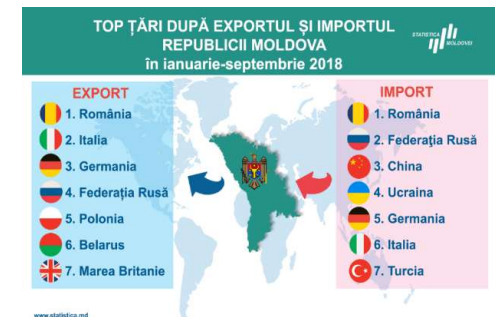
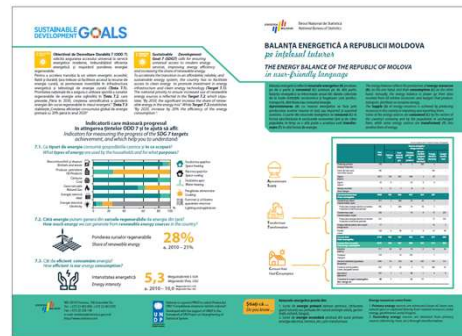
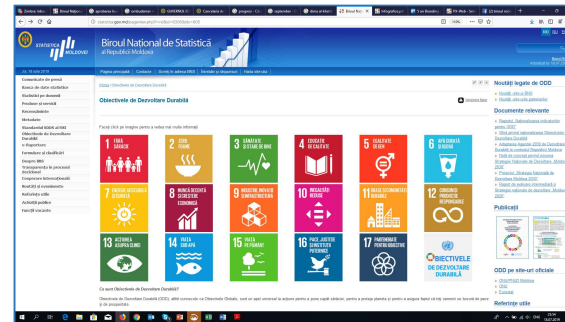


COMMUNICATION on SDGs

Dedicated occasions (Europe Day)

Official web-sites & thematic publications

Social media



5

USE of Statistics



RE-USE of data for SDGs

URBAN MOBILITY PLAN DEVELOPMENT IN CHISINAU

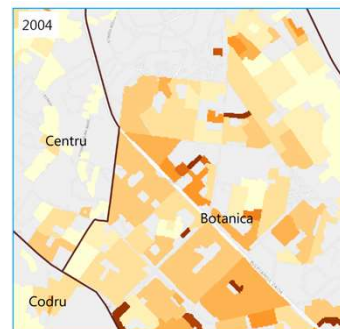
URBAN AND PERI-URBAN
LAND USE / LAND COVER
CLASSIFICATION AND
ASSOCIATED CHANGES

CENSUS-BASED POPULATION
DISTRIBUTION/ DENSITY
(BY DAY AND NIGHT)

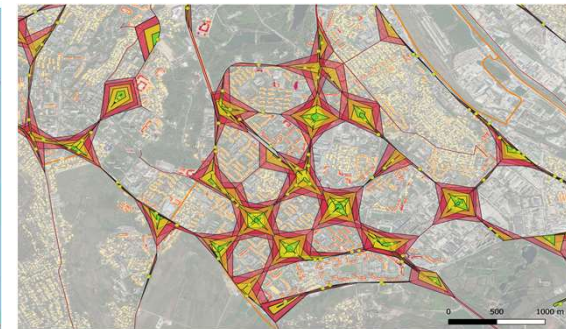
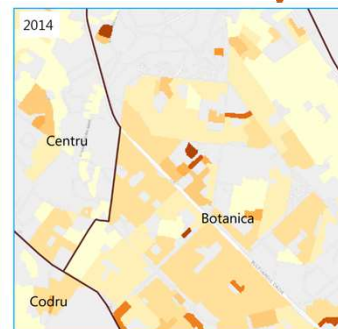
INSIGHTS INTO RECENT POPULATION AND
MOBILITY TRENDS

Multiple sources:

- Orthophoto (MD GeoPortal & private)
- ESA Earth observation data
- Cadastral limits and building footprints
- Census data (NBS)
- Call Detail Records
- Electricity consumption data
- GIS roads, railways network and public transportation, stations/nodes
- Micronarratives



Night-time population of Chisinau



Walking distance from each bus stop

- Stations
- Transport Network
- Area of Interest
- ServiceArea_100m
- ServiceArea_200m
- ServiceArea_300m

Potential analysis:

- Mobility & Network Analysis
- Connectivity between bus stops and residential areas
- Urban transport demand
- Distance to specific hotspots (schools, hospitals, fire departments, etc)

TARGET 11-2



AFFORDABLE AND
SUSTAINABLE
TRANSPORT SYSTEMS



Evidence-based ...

Analysis



2009, 2019

Capacity building



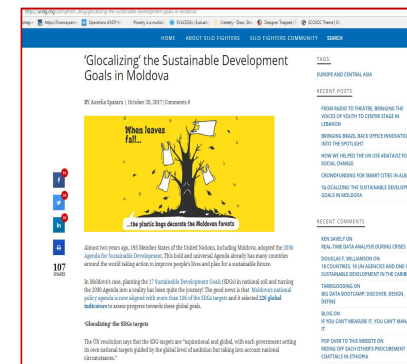
2016-2019

Speeches at national forums



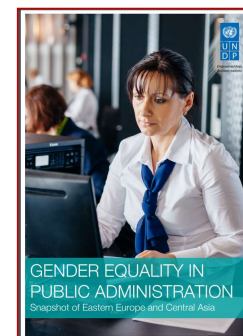
2015-2018

blog posts



Regional reports

2017



5

NEXT STEPS



Policy-makers: short-term PRIORITIES



A better **linkage** between strategic PLANNING process and the MONITORING & EVALUATION process



Strengthen intra- and inter-institutional **cooperation** in terms of monitoring DATA and INFORMATION NEEDED for the planning/monitoring processes



Strengthen **capacities** for MONITORING, REPORTING and EVALUATION in ministries and other public authorities –



Develop **capacities** for DATA PRODUCTION - accurate, timely and disaggregated



VNR 2020



Statisticians: short-term PRIORITIES



Official **endorsement** of
SDGs indicators re-
assessment results
(*January 2020*)



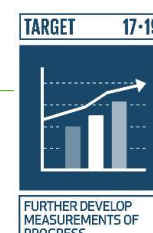
Finalize **Roadmap** on data gaps and
Assessment Report (*January 2020*)



Dissemination of time-
series on NBS website
(December 2019) and other
relevant sites (*March 2020*)



Increase **availability** of **missing**
SDGs indicators and
disaggregation-s (*now & up to*
2030)



Statistical Annex to VNR 2020



Let's build our future



aurelia.spataru@statistica.gov.md

Thank you! (=) *mulțumesc!*

