

Data Innovation for SDGs Monitoring

15th IAEG-SDGs

Omar Seidu

Director, Social Statistics & SDGs Monitoring

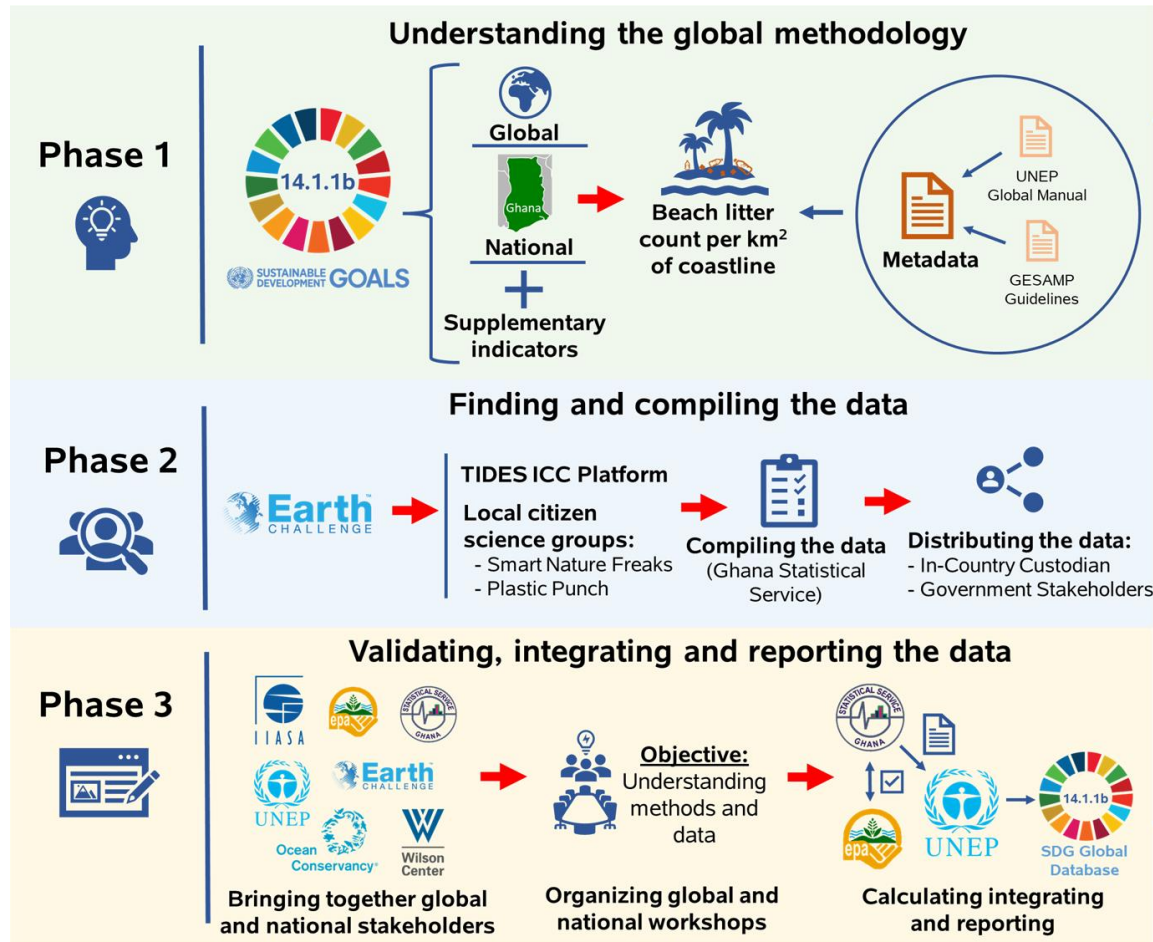


GHANA
STATISTICAL SERVICE

Outline

- Leveraging CSOs data to monitor **SDG 14**
- Using geospatial information to monitor **SDG 1**
- Machine learning for scraping 20 years of pdf data for **SDG 4**
- Earth observation data for monitoring **SDG 15**
- Citizens data for **SDG 5, 11, 16**
- Conclusion

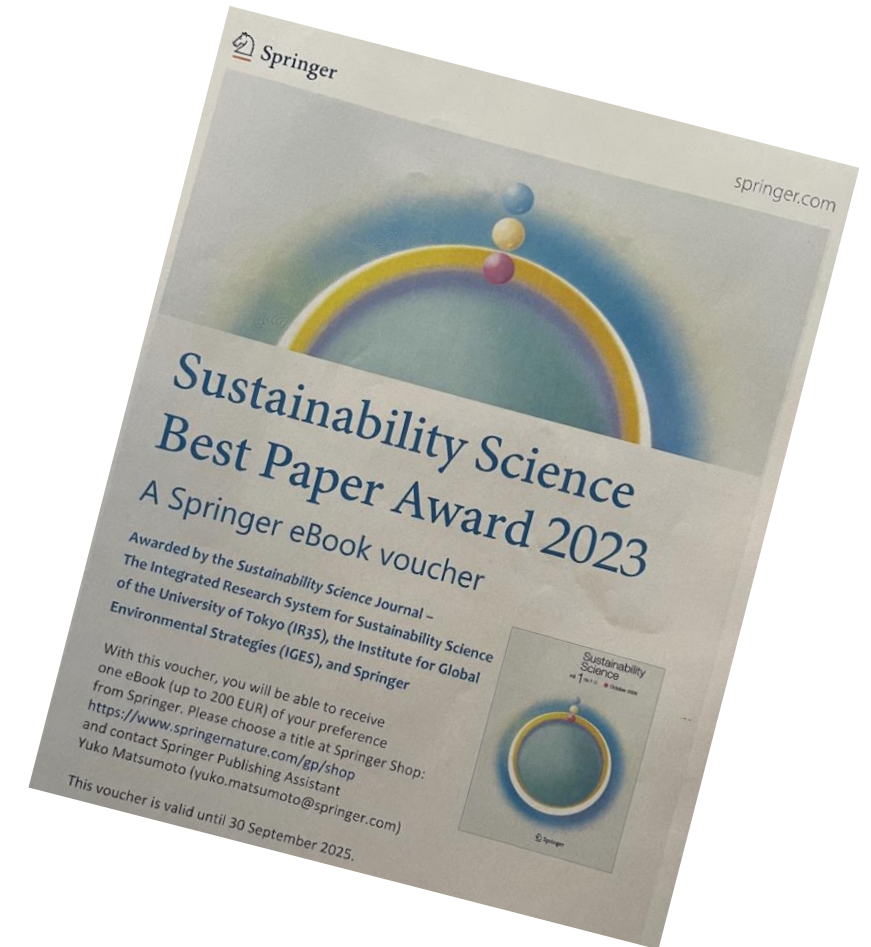
Monitoring marine litter in Ghana (SDG 14.1.1b)



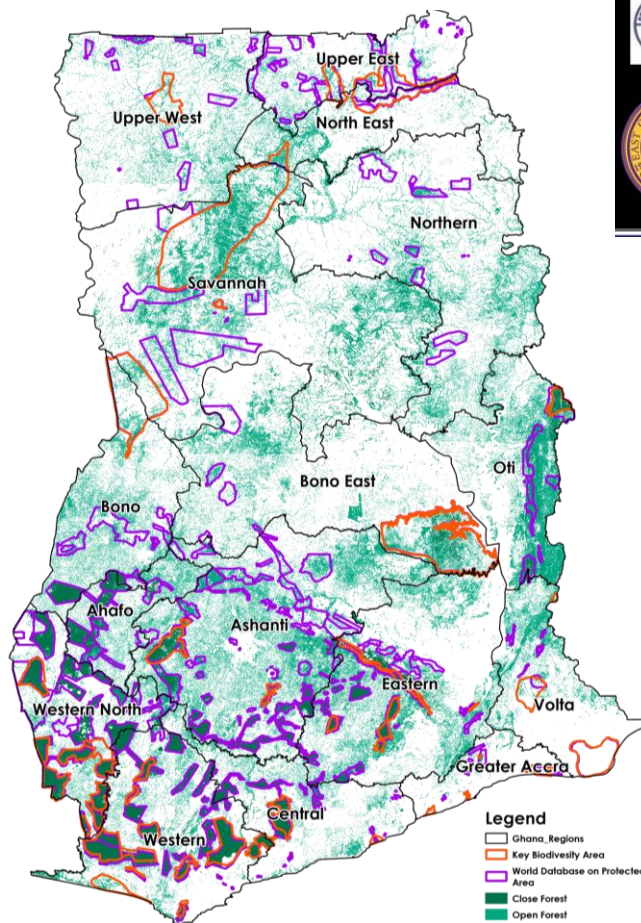
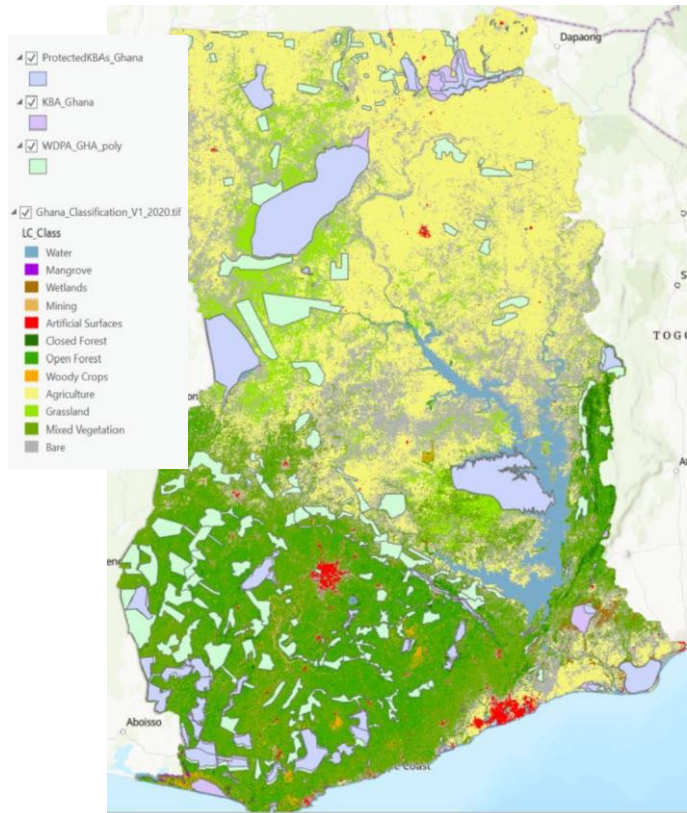
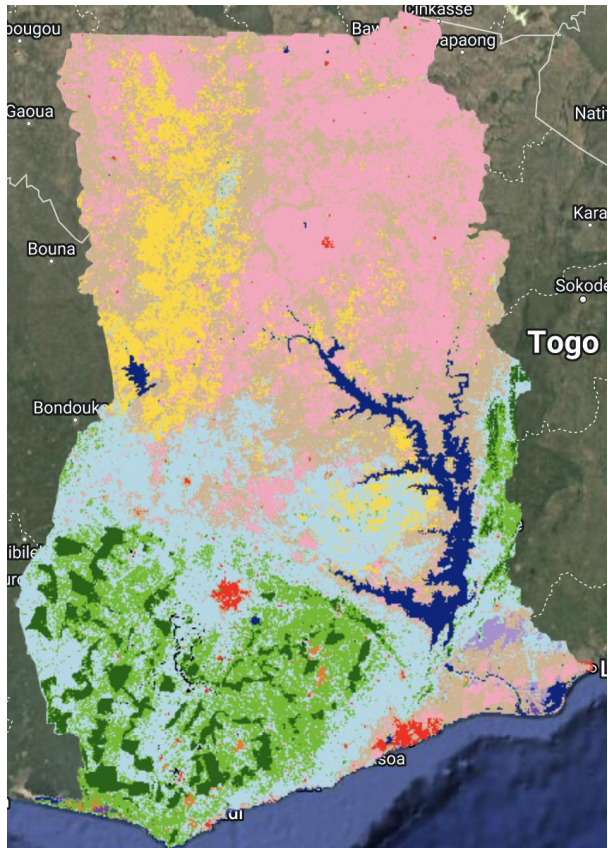
Align the ICC methodology with the global 14.1.1b indicator methodology

Facilitate support to the local citizen science groups for future data collection activities

Ensure policy uptake and impact



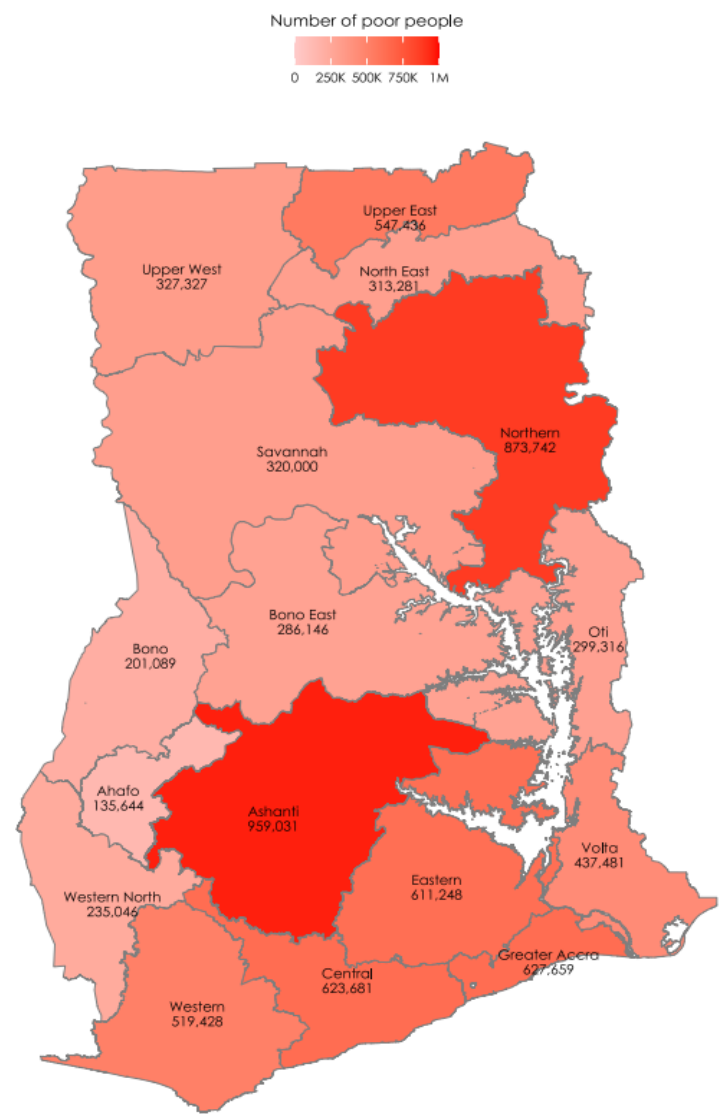
Using Earth Observation for SDG 15 monitoring (15.1.1; 15.1.2; 15.4.1)



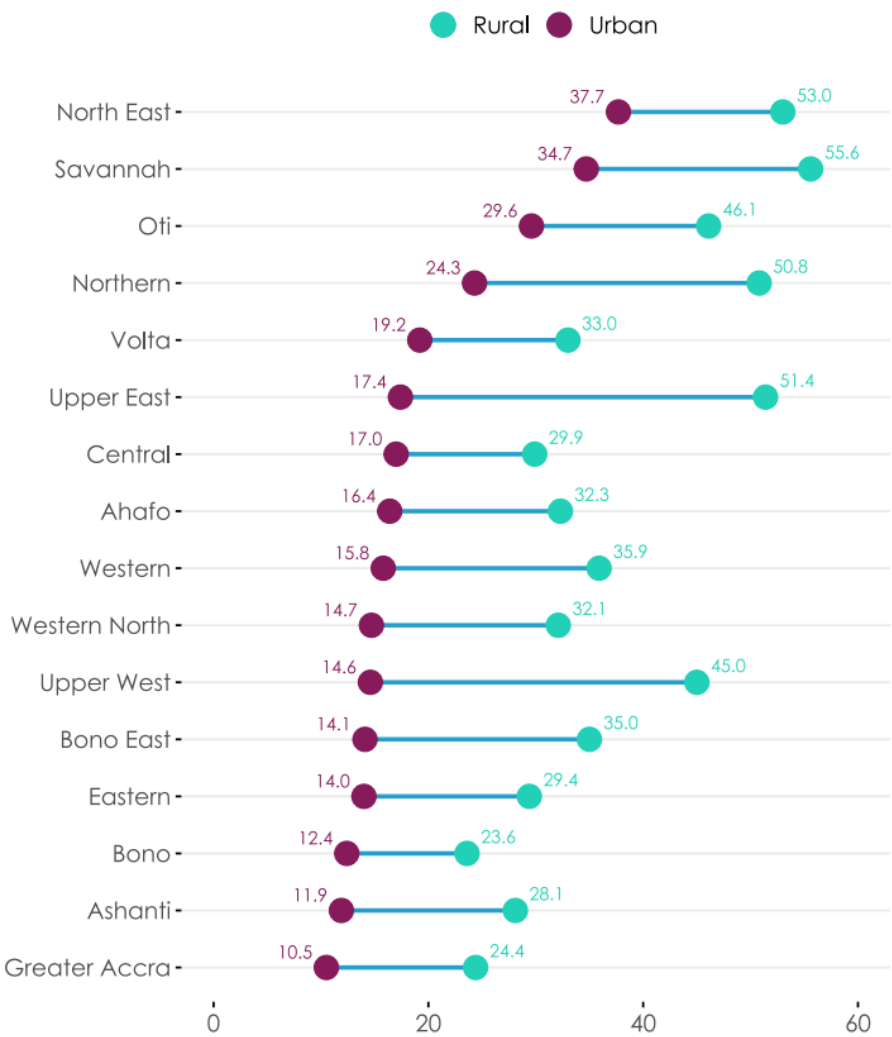
Interactive results are here:
<https://amandajpayton.users.eartengine.app/view/agu-results>



Multi-dimensional poverty by region



Disparities by type of place of residence



District ranking in multidimensional poverty

Top 5 districts

| INCIDENCE | |
|--------------------------|-----------|
| District | Incidence |
| Asokwa Municipal | 6.3 |
| Ashaiman Municipal | 7.5 |
| Tema West Municipal | 8.2 |
| Ga Central Municipal | 8.3 |
| Ablekuma North Municipal | 8.3 |

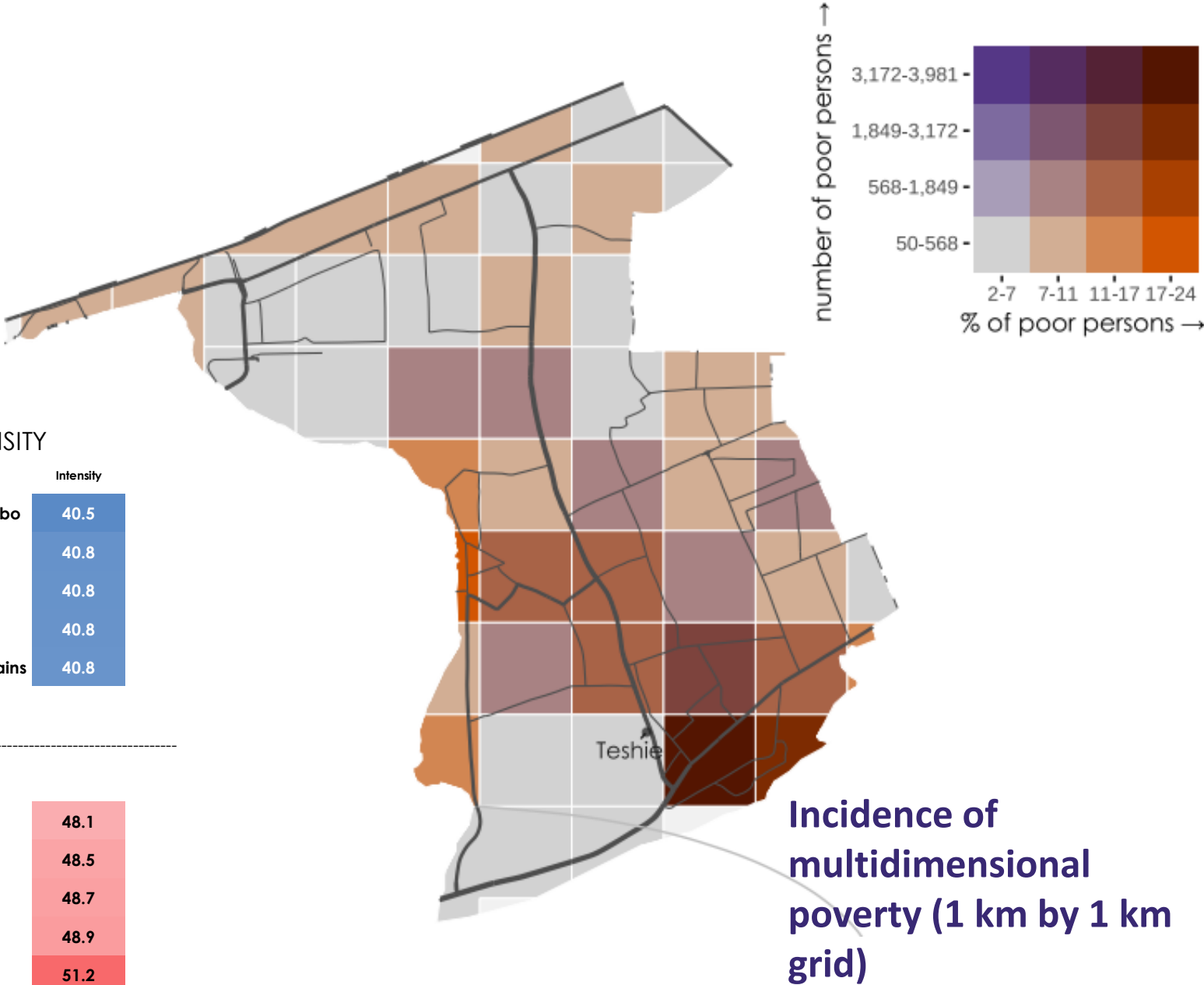
Other 251 Districts

Bottom 5 districts

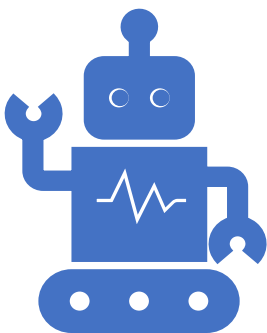
| | |
|------------------|------|
| North Gonja | 58.4 |
| North East Gonja | 60.4 |
| Central Gonja | 61.8 |
| Wa West | 61.9 |
| Nabdam | 68.6 |

| INTENSITY | |
|----------------------|-----------|
| District | Intensity |
| Upper Manya Krobo | 40.5 |
| Krachi Nchumuru | 40.8 |
| Dormaa West | 40.8 |
| Pru West | 40.8 |
| Sekyere Afram Plains | 40.8 |

| | |
|---------|------|
| Tempane | 48.1 |
| Bongo | 48.5 |
| Wa West | 48.7 |
| Talensi | 48.9 |
| Nabdam | 51.2 |



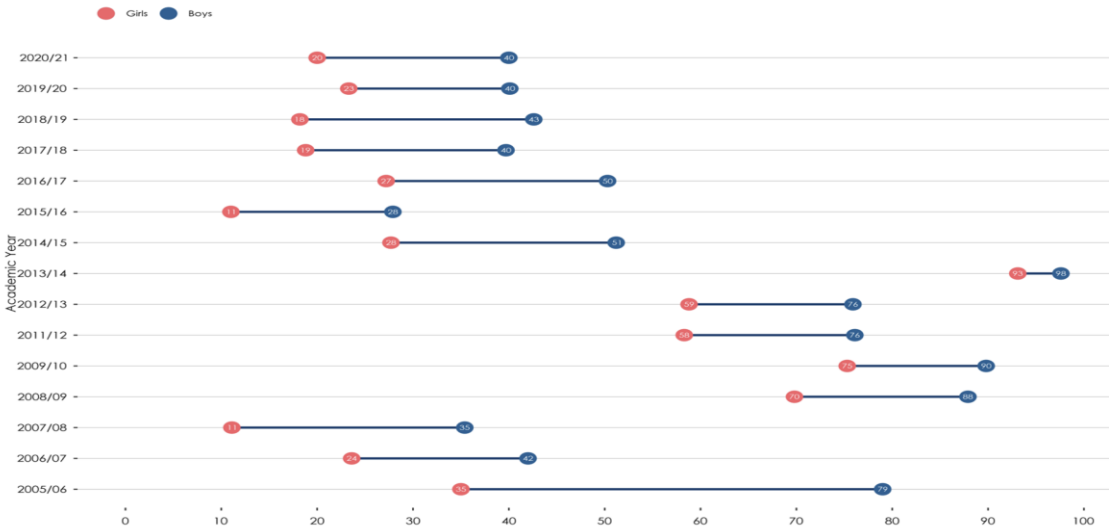
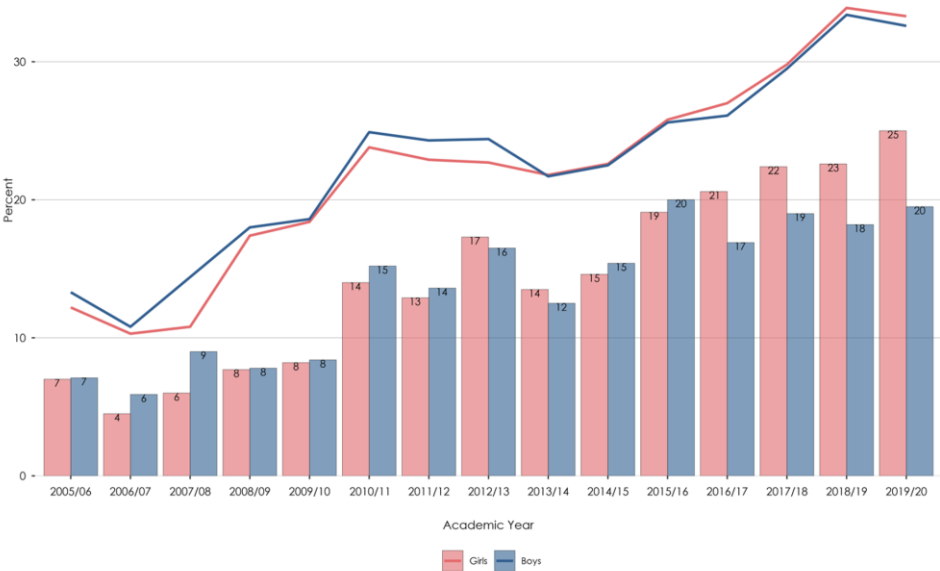
Access and quality education using administrative data (SDG 4)



Using data science toolbox for automated scraping, verification, and quality check



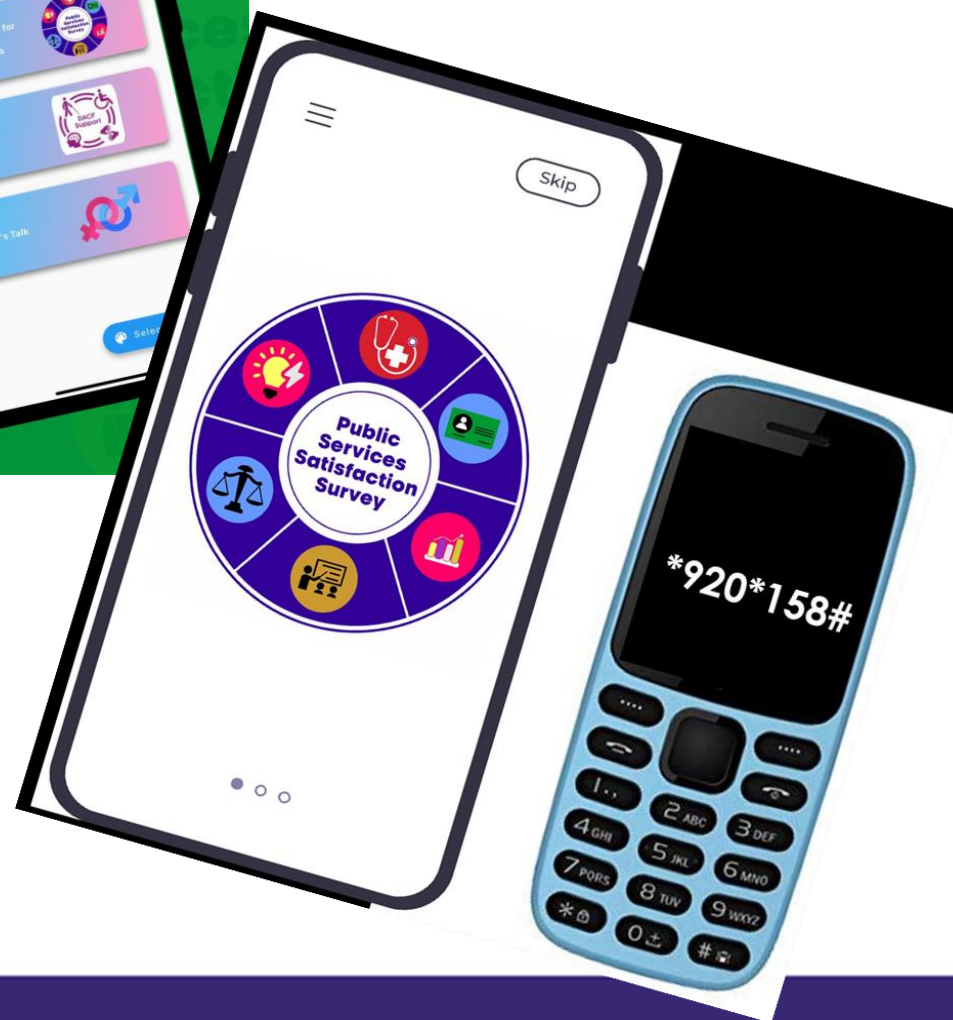
Source data in PDF reports for each year from 2000 to 2021



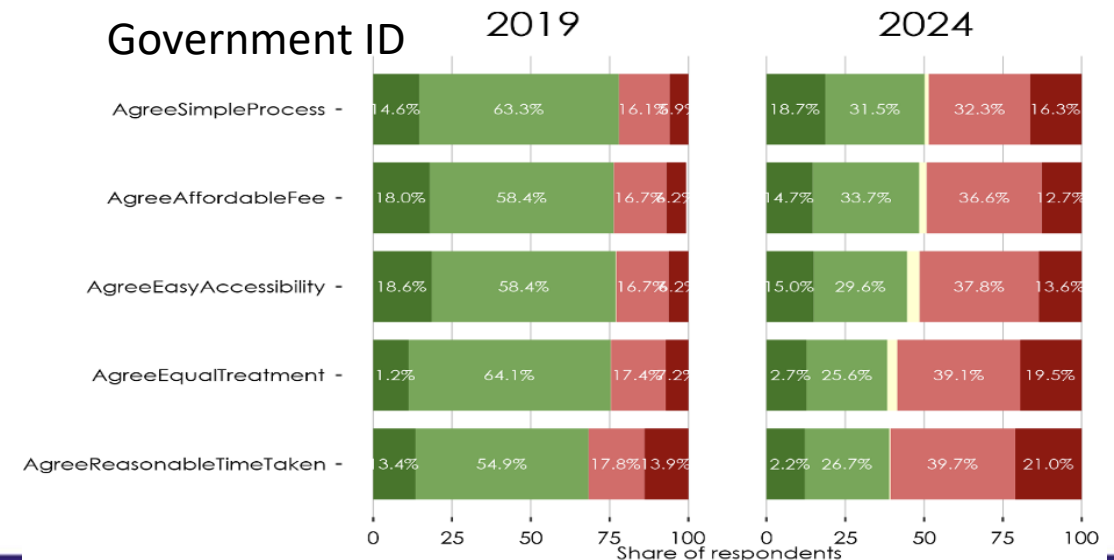
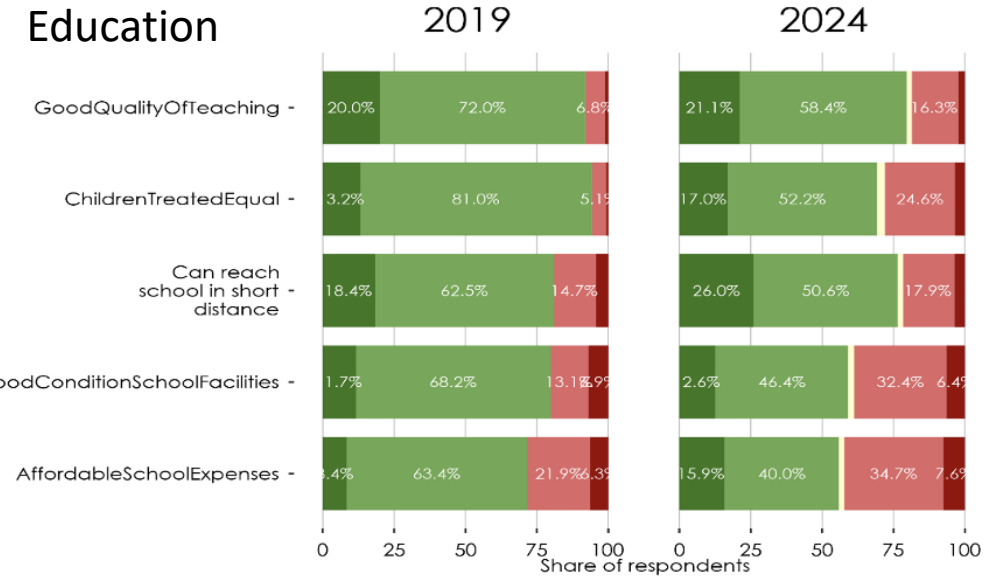
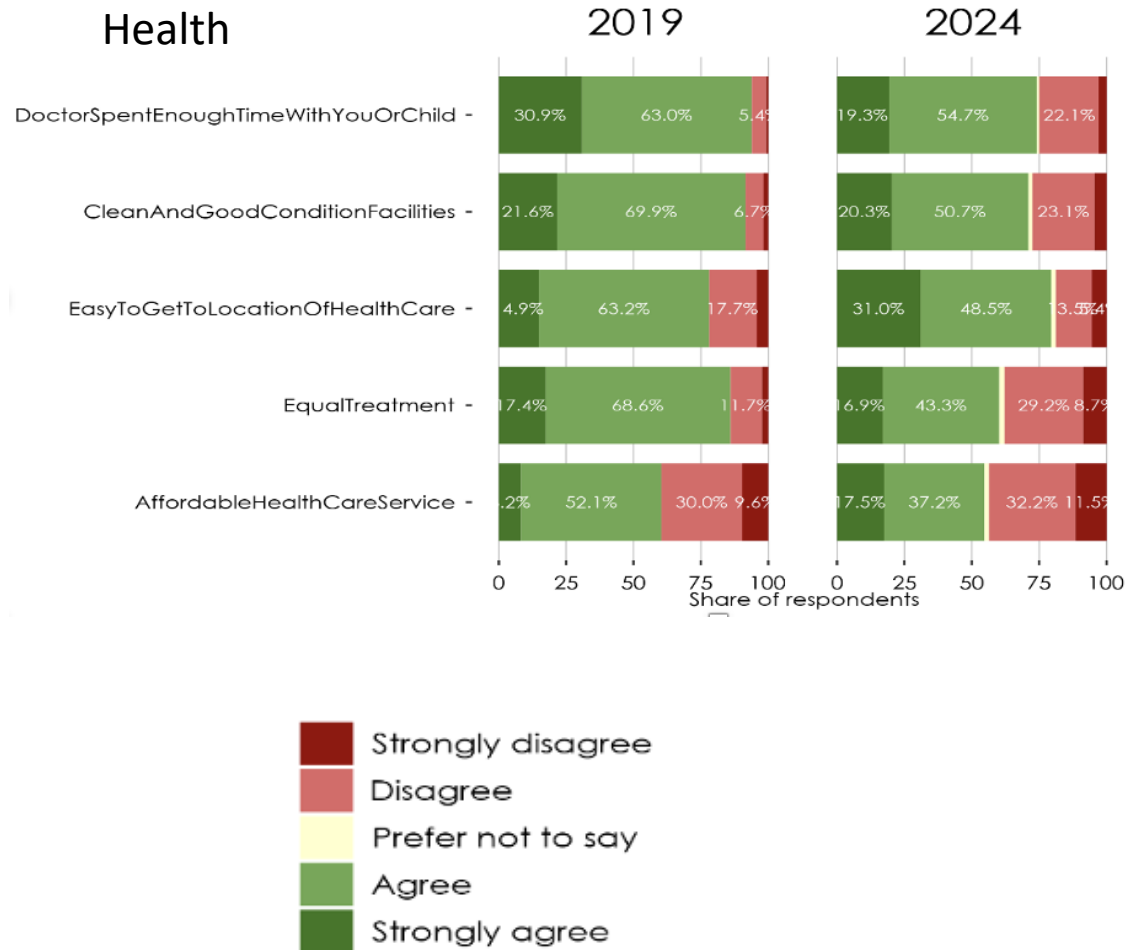
User-centric co-creation of citizens' data Apps for local-level data

Indicators

- 5.2.2
- 11.7.2
- 16.2.3
- 16.6.2



Satisfaction with specific aspects of health care services, public education & government issued ID services (SDG 16.6.2)



Conclusion

- Our experience is one that demonstrates the value of data innovation for SDGs monitoring
 - Potential for monitoring **SDG 5.2.2** using citizens ' data
- Notable impacts have already being observed across national and local governments
- Ghana's 2025 VNR will feature a number of indicators using non-traditional data
- Happy to partner others to work further in these areas

**Thank you for your
attention**

Omar.seidu@statsghana.gov.gh



**GHANA
STATISTICAL SERVICE**